

DURO BAG
 A NOVOLEX BRAND
 1 Duro Way
 Walton, KY 41094
 Duro.ArtDepartment@novolex.com
 CREATED BY: B. Wallrawe
 TECHNICAL:
 Starting Web: 28 1/4" Finished Web 28.00"

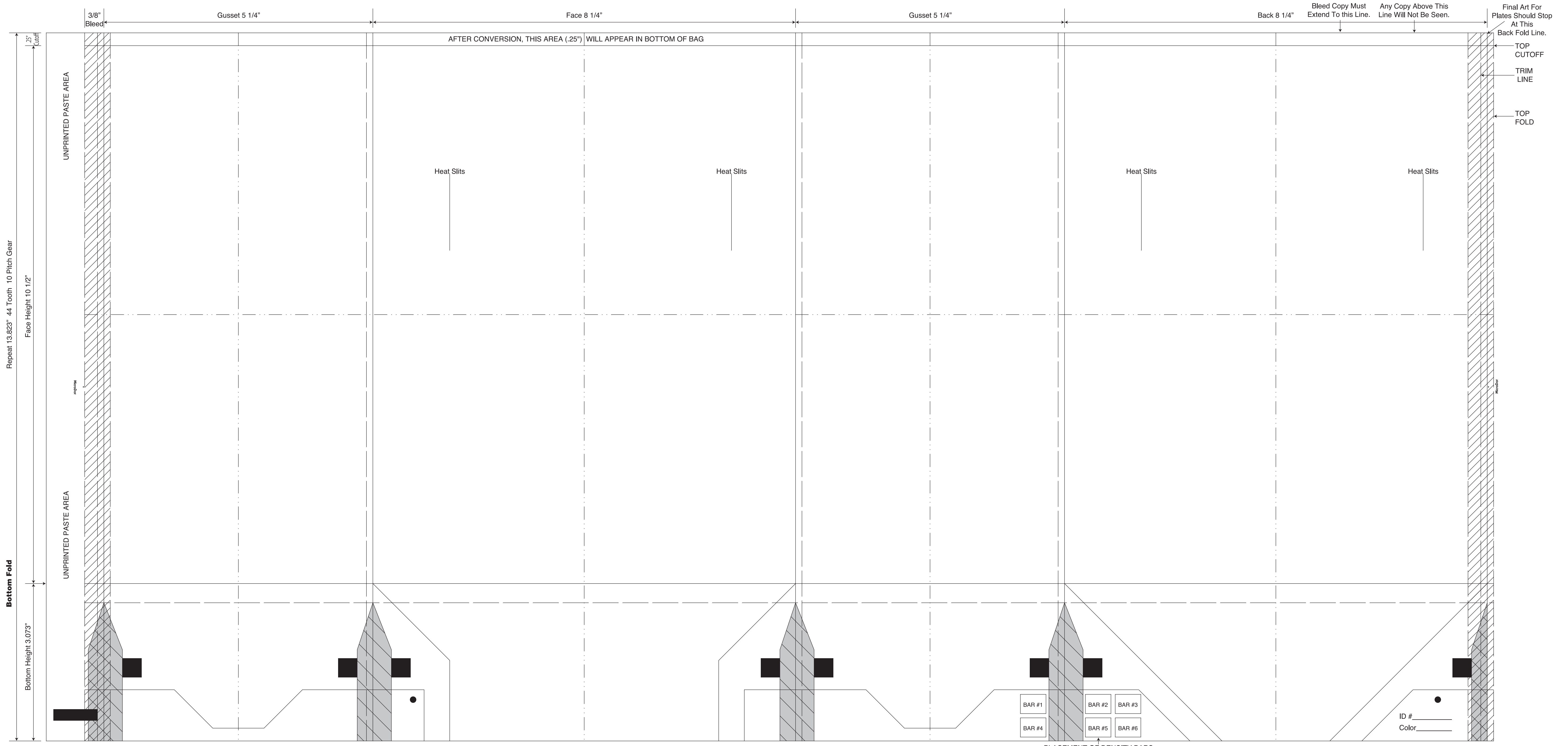
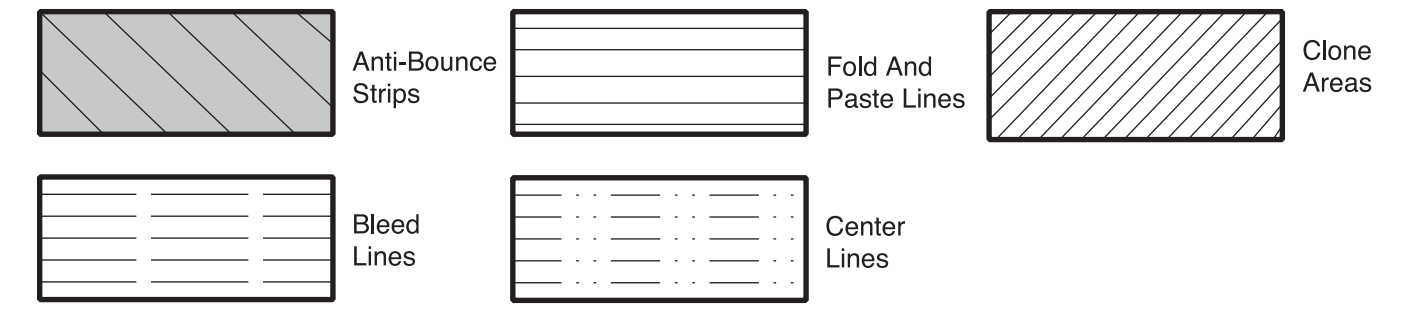
DESIGN GROUP:
 Hot Food Series
 8 1/4 x 5 1/4 x 10 1/2
 DATE: 2/9/16
 SCALE: FULL

This .020" Microdot Is For Flexographic Printing Only. It Should Be Placed On Every Color At The Center Of Largest Copy (Top To Bottom). The Left Microdot Gets Placed 1/64" Inside The Paste Area. The Right Microdot Gets Placed 1/64" Outside The Right Side Back Fold Edge Line.

BORDER DESIGNS
 Because Of Machine Movement In Bag Conversion, Copy Should Be Placed At Least 1/4" From Fold Lines Or Edges. In The Top Area, Use 1/2" Bleed. Border Designs Should Be Kept 1/2" From Fold Edges, Top Cutoff And Bottom Fold.

PLEASE NOTE: All Screen, Half-Tones And Process Jobs Must Be Reviewed By Duro's Graphic Printing Division Before Preparing Art.
This Proof is For Copy, Elements And Position Only. NOT FOR COLOR APPROVAL.

Fill All 5 Anti-Bounce Area With 40% Screen In All Colors Containing Screens
 Full Panel Print Must Bleed Into Top & Bottom Panel Of Bag, Which Is Indicated On Template



Cut Flap 5 1/4"
 Printed Flap 6 1/4"
This Proof is For Copy, Elements And Position Only. NOT FOR COLOR APPROVAL.

PLACEMENT OF DENSITY BARS
 (UP TO 6 COLORS)