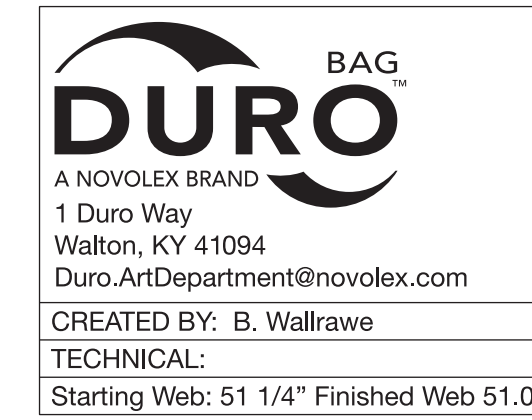


Distortion Rate For Pre Print Plates For .107 Is 97.12%

Distortion Rate For Tail Print Plates For .067 Is 98.25%

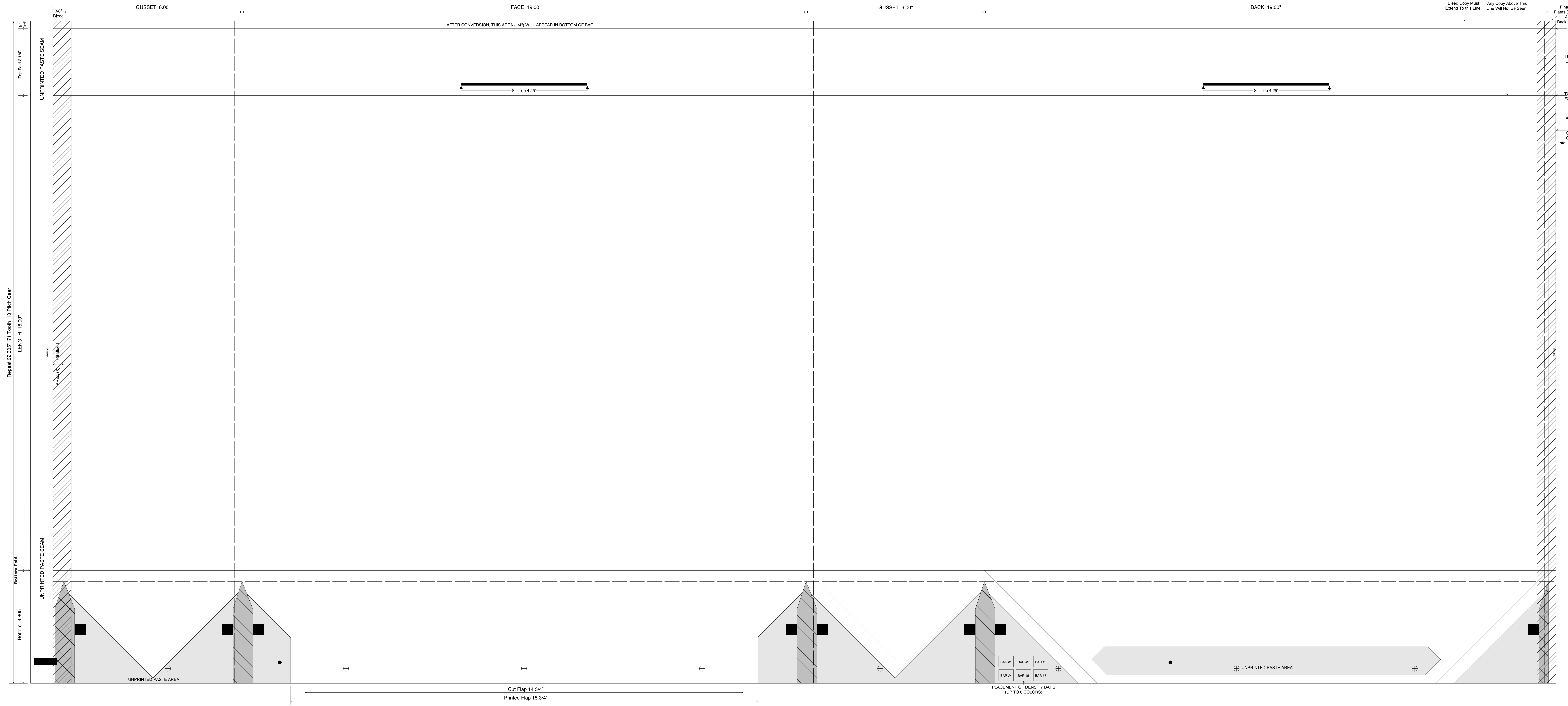
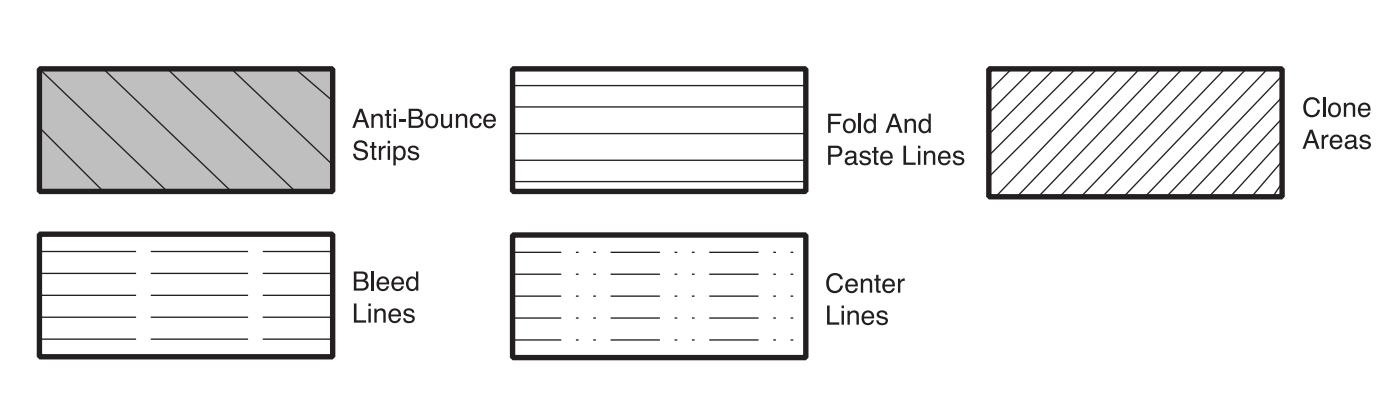


DESIGN GROUP: Shopper Series  
JV Slit Uptowner  
19 x 6 x 16  
DATE: 2/10/16 SCALE: FULL

**PLEASE NOTE:** This proof is for copy, content, and position approval only. This proof is not for actual color or paper substrate used to produce your order. Carefully check all traps (overlap of color) punctuation, spelling, copy and elements. Please use attached approval letter for signed approval. Approval letter, proof and ink roll outs must be returned to produce your order.

**BORDER DESIGNS**  
Because Of Machine Movement In Bag Conversion, Copy Should Be Placed At Least 1/4" From Fold Lines Or Edges. In The Top Area, Use 1/2" Bleed. Border Designs Should Be Kept 1/2" From Fold Edges, Top Cutoff And Bottom Fold.  
Full Panel Print Must Bleed Into Top & Bottom Of Bag, Which Is Indicated On Template

Fill All 5 Anti-Bounce Area With 40% Screen In All Colors Containing Screens



Repeat 22,395" 7.1 Teeth 10 Pitch Gear LENGTH 16.00"

Bottom Fold Bottom 3.895"

Final Art For Plates Should Stop At This Back Fold Line. TOP CUTOFF TRIM LINE TOP FOLD Artwork Bleeds To This Line To Complete Step & Repeat Of Copy Bleed Into Left Gusset Panel.

Bleed Copy Must Extend To This Line. Any Copy Above This Line Will Not Be Seen.

AFTER CONVERSION, THIS AREA (1/4") WILL APPEAR IN BOTTOM OF BAG

PLACEMENT OF DENSITY BARS (UP TO 6 COLORS)  
BAR #1 BAR #2 BAR #3  
BAR #4 BAR #5 BAR #6

Cut Flap 14 3/4"  
Printed Flap 15 3/4"

UNPRINTED/PASTE AREA