

**Distortion Rate For Pre Print  
Plates For .107 Is 96.07%**

**Distortion Rate For Tail Print  
Plates For .067 Is 97.61%**

**DURO** BAG.  
A NOVOLEX BRAND  
1 Duro Way  
Walton, KY 41094  
Duro.ArtDepartment@novolex.com  
CREATED BY: B. Wallrawe  
TECHNICAL:  
Starting Web: 45 1/4" Finished Web 45.00"

DESIGN GROUP:  
Shopper Series

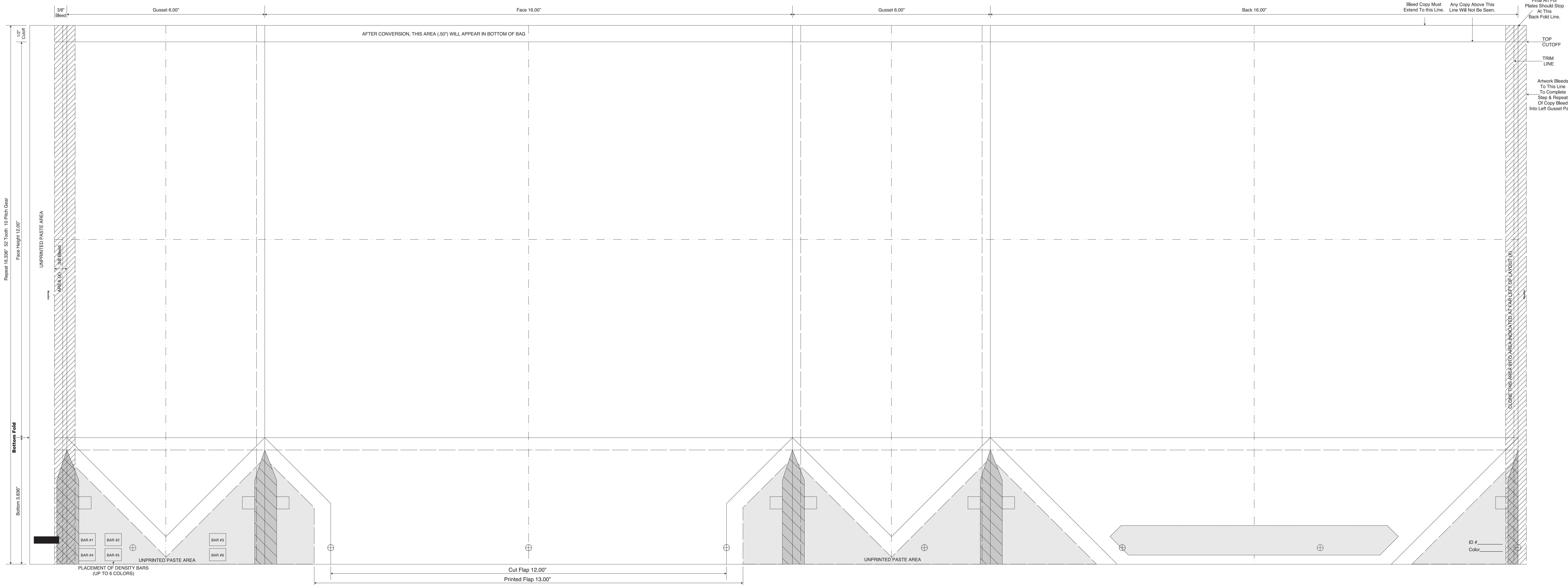
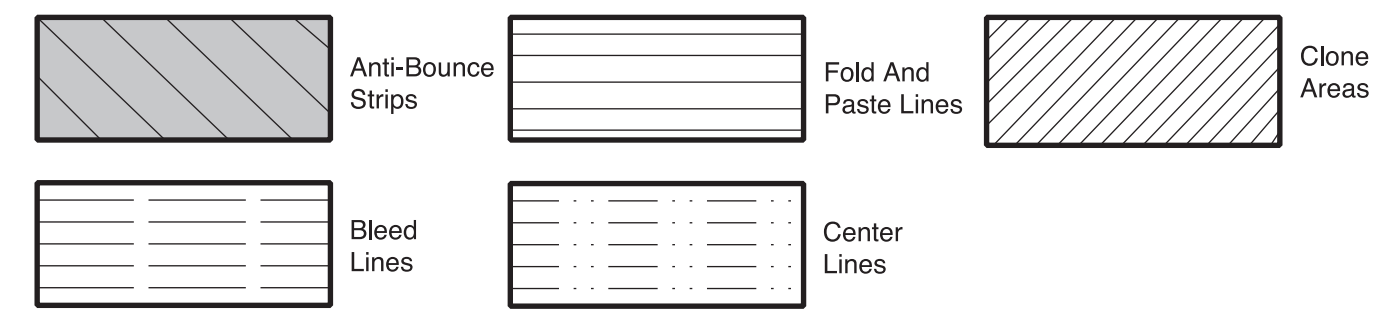
Miss Tote  
16 x 6 x 12

DATE: 2/10/16 SCALE: FULL

**PLEASE NOTE:** This proof is for copy, content, and position approval only. **This proof is not for actual color or paper substrate used to produce your order.** Carefully check all traps (overlap of color) punctuation, spelling, copy and elements. Please use attached approval letter for signed approval. Approval letter, proof and ink roll outs must be returned to produce your order.

**BORDER DESIGNS**  
Because Of Machine Movement In Bag Conversion, Copy Should Be Placed At Least 1/4" From Fold Lines Or Edges. In The Top Area, Use 1/2" Bleed. Border Designs Should Be Kept 1/2" From Fold Edges, Top Cutoff And Bottom Fold.  
Full Panel Print Must Bleed Into Top & Bottom Of Bag, Which Is Indicated On Template

Fill All 5 Anti-Bounce Area With 40% Screen In All Colors Containing Screens



Repeat 16.336" 52 Tooth 10 Pitch Gear  
Face Height 12.00"

Bottom Fold  
Bottom 3.896"

Bleed Copy Must Extend To this Line.  
Any Copy Above This Line Will Not Be Seen.  
Final Art For Plates Should Stop At This Back Fold Line.  
TOP CUTOFF  
TRIM LINE  
Artwork Bleeds To This Line To Complete Step & Repeat Of Copy Bleed Into Left Gusset Panel.

CLONE THIS AREA INTO AREA INDICATED AT FAR LEFT OF INOUT (X)

PLACEMENT OF DENSITY BARS (UP TO 6 COLORS)  
BAR #1  
BAR #2  
BAR #3  
BAR #4  
BAR #5  
BAR #6

ID # \_\_\_\_\_  
Color \_\_\_\_\_