

Distortion Rate For Pre Print Plates For .107 Is 97.41%

Distortion Rate For Tail Print Plates For .067 Is 98.42%



DESIGN GROUP: Shopper Series

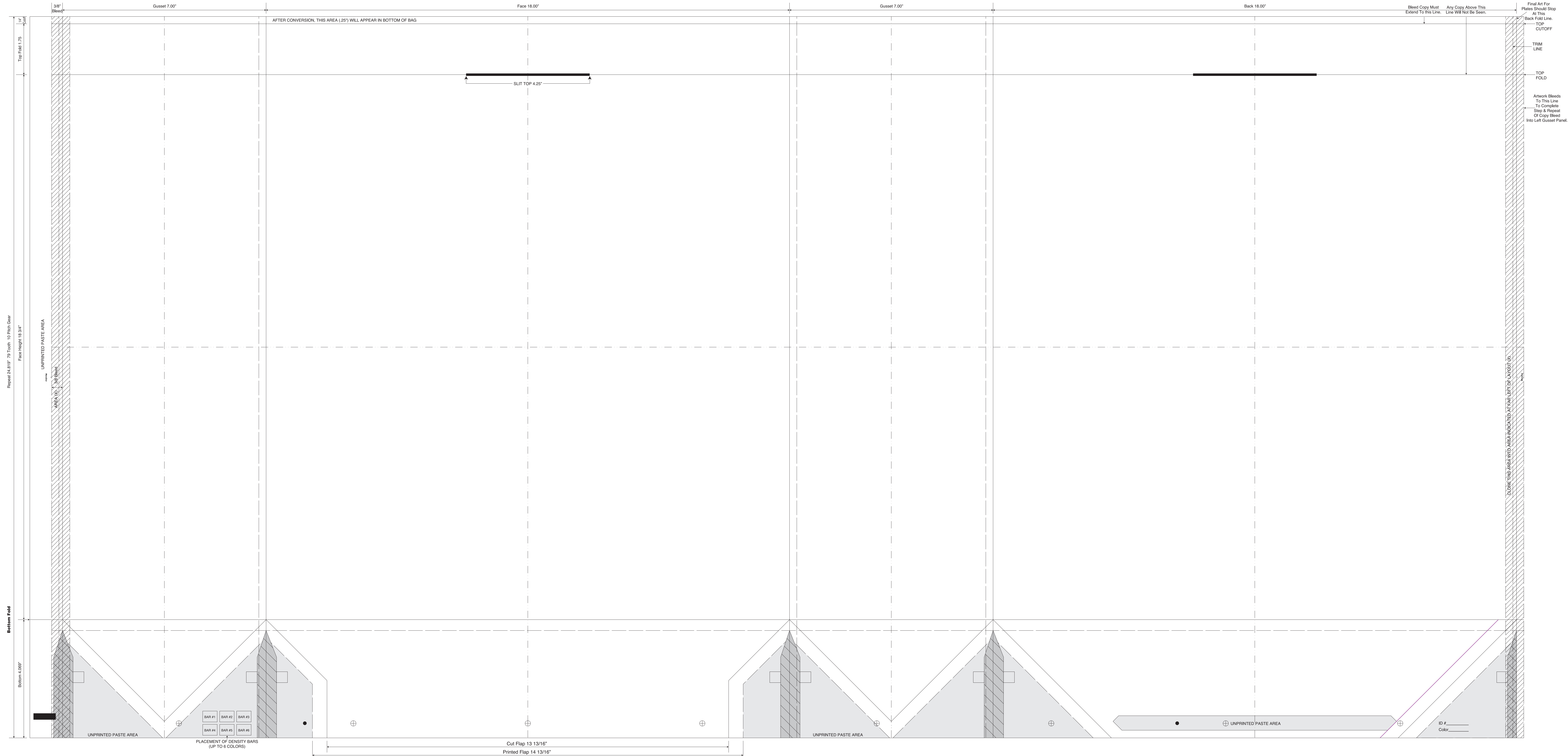
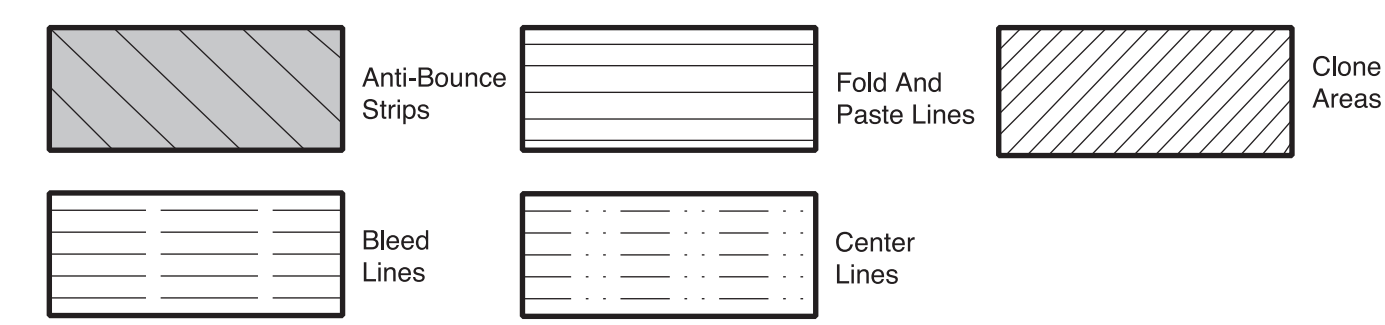
Knotless Macrame Slit Top Cargo 18 x 7 x 18.75

DATE: 2/10/16 SCALE: FULL

PLEASE NOTE: This proof is for copy, content, and position approval only. This proof is not for actual color or paper substrate used to produce your order. Carefully check all traps (overlap of color) punctuation, spelling, copy and elements. Please use attached approval letter for signed approval. Approval letter, proof and ink roll outs must be returned to produce your order.

BORDER DESIGNS
Because Of Machine Movement In Bag Conversion, Copy Should Be Placed At Least 1/4" From Fold Lines Or Edges. In The Top Area, Use 1/2" Bleed. Border Designs Should Be Kept 1/2" From Fold Edges, Top Cutoff And Bottom Fold.
Full Panel Print Must Bleed Into Top & Bottom Of Bag, Which Is Indicated On Template

Fill All 5 Anti-Bounce Area With 40% Screen In All Colors Containing Screens



Repeat 24.619" 79 Tooth, 10 Pitch Gear Face Height 18.34"

Bottom Fold

Bottom 4.069"

UNPRINTED PASTE AREA
BAR #1 BAR #2 BAR #3
BAR #4 BAR #5 BAR #6
PLACEMENT OF DENSITY BARS (UP TO 6 COLORS)

Cut Flap 13 13/16"
Printed Flap 14 13/16"

UNPRINTED PASTE AREA

ID # _____
Color _____

Bleed Copy Must Extend To This Line. Any Copy Above This Line Will Not Be Seen.
Final Art For Plates Should Stop At This Back Fold Line. TOP CUTOFF
TRIM LINE
TOP FOLD
Artwork Bleeds To This Line To Complete Strip & Repeat Of Copy Bleed Into Left Gusset Panel.

CLONE THIS AREA INTO AREA INDICATED AT FAR LEFT OF LAYOUT (X)